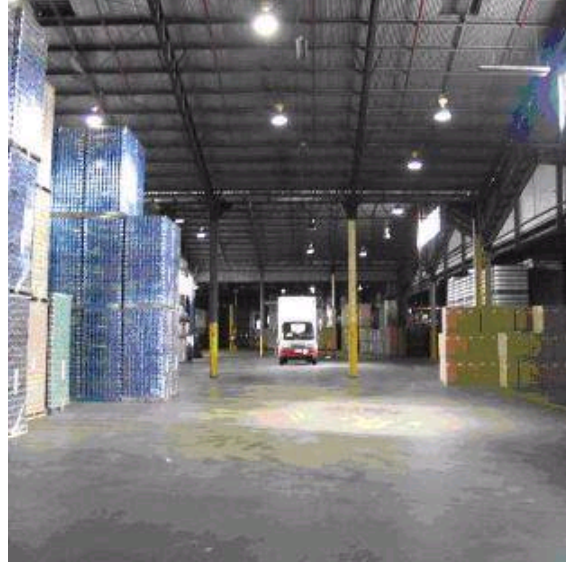


INDUSTRIAL

1979 Ipswich Rd Rocklea QLD, Australia



Description

- Established Industrial location
- Direct access to the Ipswich Motorway
- Inexpensive office space within 10km of the CBD
- Areas from 2,500 sqm to 15,000 sqm

Location

The property is situated on the northern alignment of Ipswich Road and the western alignment of Donaldson Road, approximately 11 kilometres south-east of the Brisbane CBD.

Rocklea and the surrounding suburbs of acacia Ridge, Archerfield, Coopers Plains and Salisbury form the traditional industrial heartland of Brisbane.

Key Information

Area	2,500 to 15,000 sqm
Net Lettable Area	Other: - Industrial - 27,069 sqm
Agent	Peter Turnbull - Knight Frank P 07 3246 8810 M 0417 603 195
Fees	Contact Agents
Access	Contact Agents
Availability	Available now

Contact Details

Tom Phipps
 07 3020 0244
tom.phipps@valad.com.au

Disclaimer - No information contained in this document should be construed as advice, a recommendation, an offer for the sale of financial products in the Valad Property Group (VPG) or any other entity. None of the information contained in this document should be relied on or construed as financial product advice. VPG and its related entities do not make any representations or give any warranties that the information set out in this document is or will remain accurate or complete at all times and they disclaim all liability for harm, loss, costs, or damage which arises in connection with any use or reliance on the information.