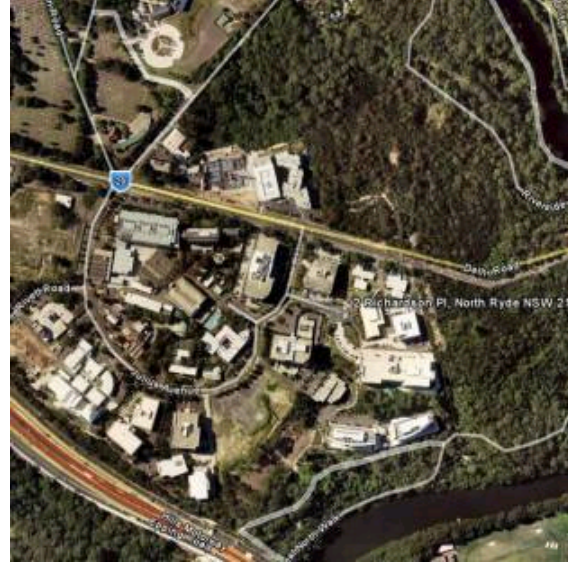
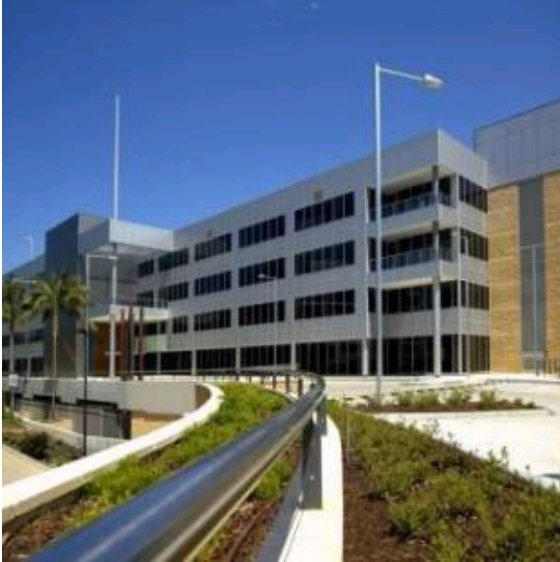


OFFICE

2 Richardson Place, North Ryde NSW, Australia



Description

- Modern campus style office building
- Basement car park able to accommodate 454 vehicles over two levels with a further 63 on-grade
- Areas available from 500 sqm to 1,780 sqm
- Heritage cottage also available for lease (c.100 sqm commercial)
- All floors offer abundant natural light and fantastic district views
- Cafe onsite
- Designed for NABERS 4.5 star rating

Location

Riverside Corporate Park is located in North Ryde, approximately 8km from North Sydney and 10km from the Sydney CBD. North Ryde is considered the premier Hi Tech business park location of the Sydney metropolitan area, incorporating prime quality occupiers including Compaq, Microsoft, Orix, Fujitsu, Resmed, Nestle, Phillips and Pfizer. Riverside Corporate Park is well located to transport routes situated adjacent to Epping Road and having direct access to the M2 Motorway, buses along Epping Road and Delhi Road. 2 Richardson Place is a short walk to the newly opened Epping to Chatswood rail network.

Key Information

Area	500 sqm to 1,780 sqm
Agent	Mark Martin - Colliers International P 02 9004 5815 M 0412 699 662, Geoff Hunt - Colliers International P 02 9004 5835 M 0411 754 440, Jason Wright - GJS Property Group P 02 9748 4644 M 0418 759 156
Fees	Contact Agents
Access	Contact Agents
Availability	Available now

Contact Details

Adam Stent

02 8257 6646

adam.stent@valad.com.au

Disclaimer - No information contained in this document should be construed as advice, a recommendation, an offer for the sale of financial products in the Valad Property Group (VPG) or any other entity. None of the information contained in this document should be relied on or construed as financial product advice. VPG and its related entities do not make any representations or give any warranties that the information set out in this document is or will remain accurate or complete at all times and they disclaim all liability for harm, loss, costs, or damage which arises in connection with any use or reliance on the information.