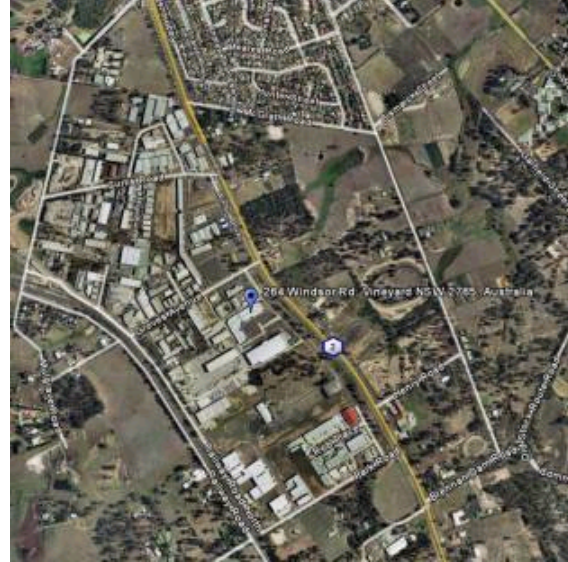


264-272 Windsor Road, McGraths Hill NSW, Australia



### Description

A bulky goods centre completed in 2004 and comprising a Bunnings Warehouse and retail tenancies. Retailers include Joyce Mayne, Repco, Subway, Eurolights, Accent Carpets and Todays Furniture. There is on site parking for 360 vehicles.

### Location

The property is located on the western side of Windsor Road, an arterial road, near the intersection with Groves Avenue and approximately 3 kilometres east of Windsor. It is within an emerging bulky goods and commercial precinct in the north western residential growth corridor of Sydney.

### Key Information

<b>Ownership</b>	VPT - 100%	<b>Car Spaces</b>	360
<b>Acquisition</b>	1/12/2004	<b>Occupancy</b>	96%
<b>Book Value (\$,000)</b>	25,900	<b>No. Of Tenants</b>	7
<b>Valuation Cap Rate</b>	8.50%	<b>WALE as at 30/06/2009</b>	4.5 years
<b>Net Lettable Area</b>	Retail: 16,478 sqm	<b>Age of Building</b>	2004

### Contact Details

Guy Halsted

+61 2 8257 6653

[guy.halsted@valad.com.au](mailto:guy.halsted@valad.com.au)

*Disclaimer - No information contained in this document should be construed as advice, a recommendation, an offer for the sale of financial products in the Valad Property Group (VPG) or any other entity. None of the information contained in this document should be relied on or construed as financial product advice. VPG and its related entities do not make any representations or give any warranties that the information set out in this document is or will remain accurate or complete at all times and they disclaim all liability for harm, loss, costs, or damage which arises in connection with any use or reliance on the information.*